



ABN 12 124 960 523

ASX and Media Release: 26 August 2024
ASX: RXM | OTCQB: RXRLF

T 1300 822 161 (Australia)
T +61 3 9068 3077 (International)
P PO Box 3435 Rundle Mall
South Australia 5000
E rex@rexminerals.com.au
W www.rexminerals.com.au

Hillside – Road Construction

Rex Minerals Limited (ASX: RXM) (Rex or the Company) through a subsidiary has entered into a contract with McMahon Services Australia Pty Ltd (MSA) in relation to the construct-only works for the road package forming part of the Hillside Project.

The Contract has been structured such that the works to be performed by MSA are split into four work packages as shown in Figure 1 below. Stage 1 is included as part of the awarded works at execution with the other stages to be awarded subsequently.

- Stage 1:** the new Yorke Highway and southern section of Port Wakefield - Yorketown Road package
- Stage 2:** the northern section of Port Wakefield - Yorketown Road and Sandy Church Road Intersection
- Stage 3:** the Sandy Church Road and Mine Site Access Road roadworks; and
- Stage 4:** the New Port Wakefield to Yorketown Road roadworks.

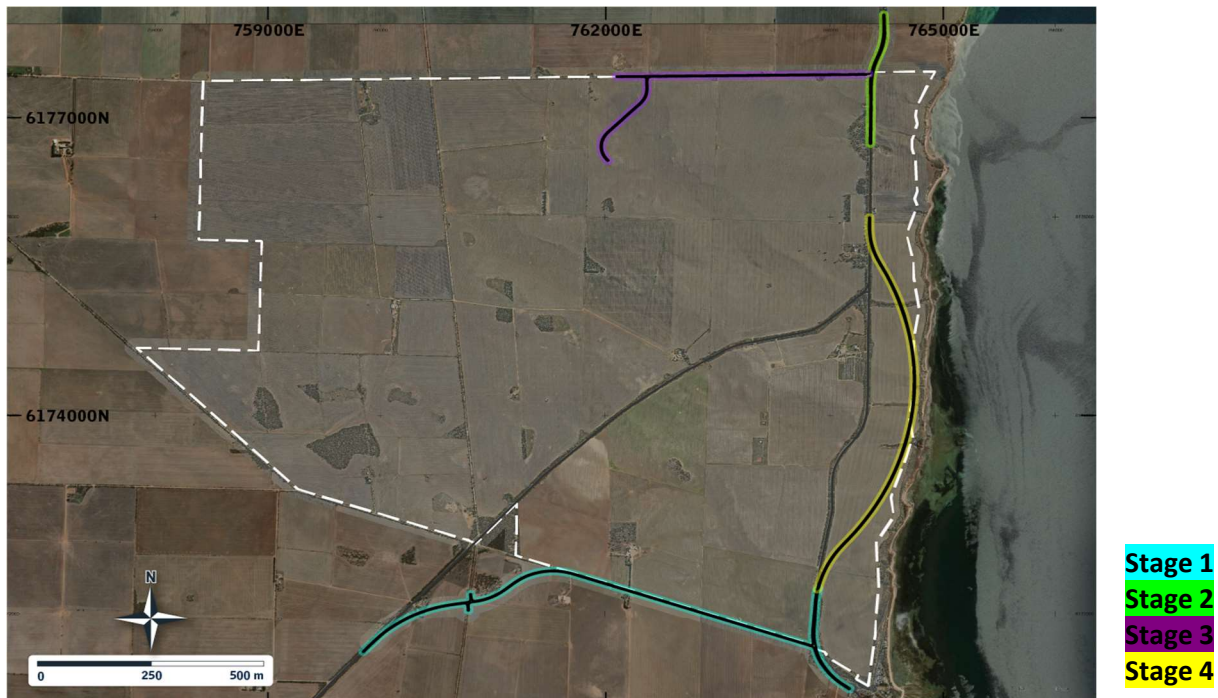


Figure 1 – Hillside Road Construction Stages 1 - 4

MACH Metals Australia Pty Ltd is supportive and has approved Rex’s subsidiary entering into the contract.

This announcement has been authorised for release by the Board of Directors of Rex Minerals.

For more information about the Company and its projects, please visit our website 'www.rexminerals.com.au' or contact:

Peter Bird
EGM Investor Relations & Business Development
T +1300 822 161 or +61 3 9068 3077
E 'rex@rexminerals.com.au'

Media Enquiries:
Gavan Collery
T +61 419 372 210
E 'gcollery@rexminerals.com.au'